



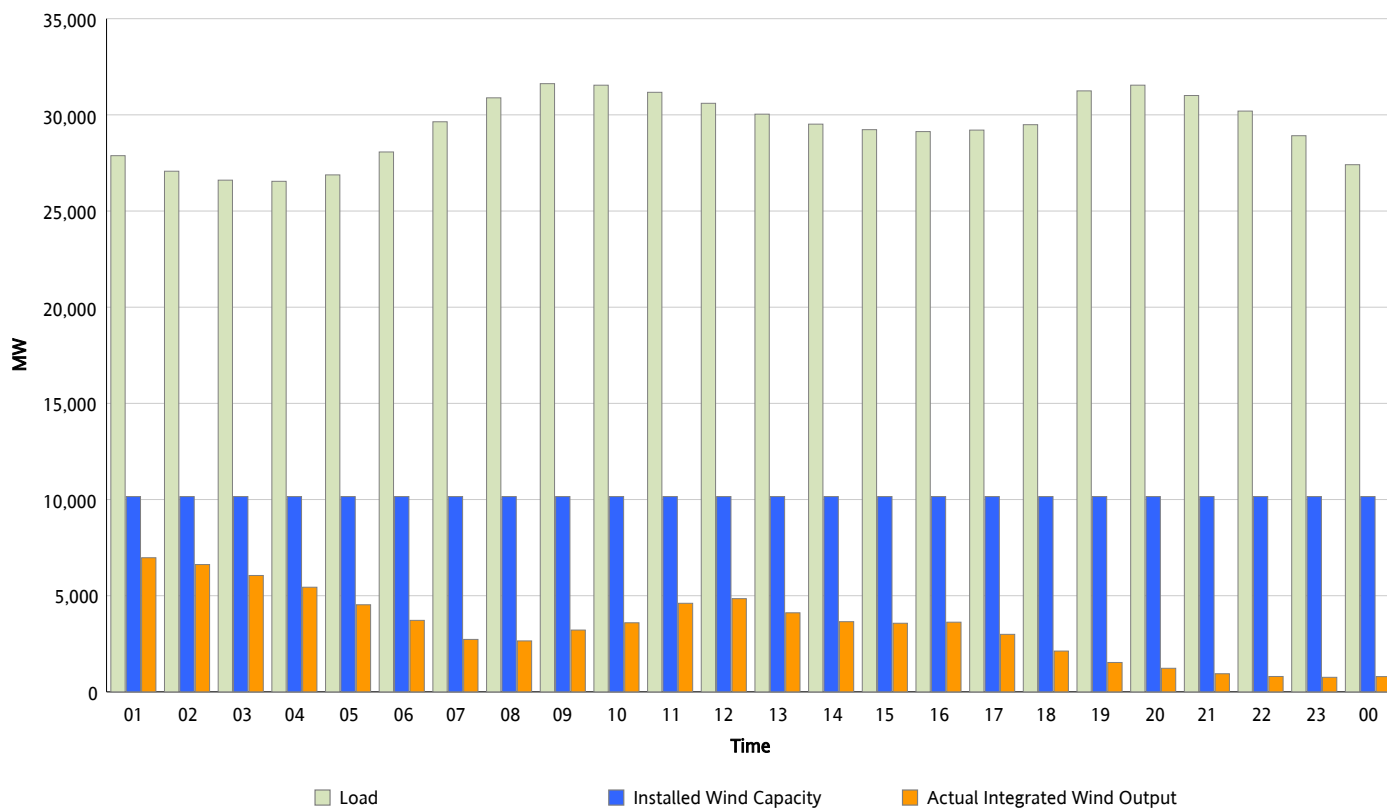
## ERCOT Grid Operations

### Wind Integration Report : 02/02/2013

Peak Load	31,623 MW
Load Peak Hour (HE)	09
Wind Over Peak	3,214 MW
Wind Record 01/29/13	8,667 MW
Max Wind Value*	7,093 MW
Wind Peak Time	00:08
Wind Integration %	25.09 %

#### Hourly Average Actual Load vs. Actual Wind Output

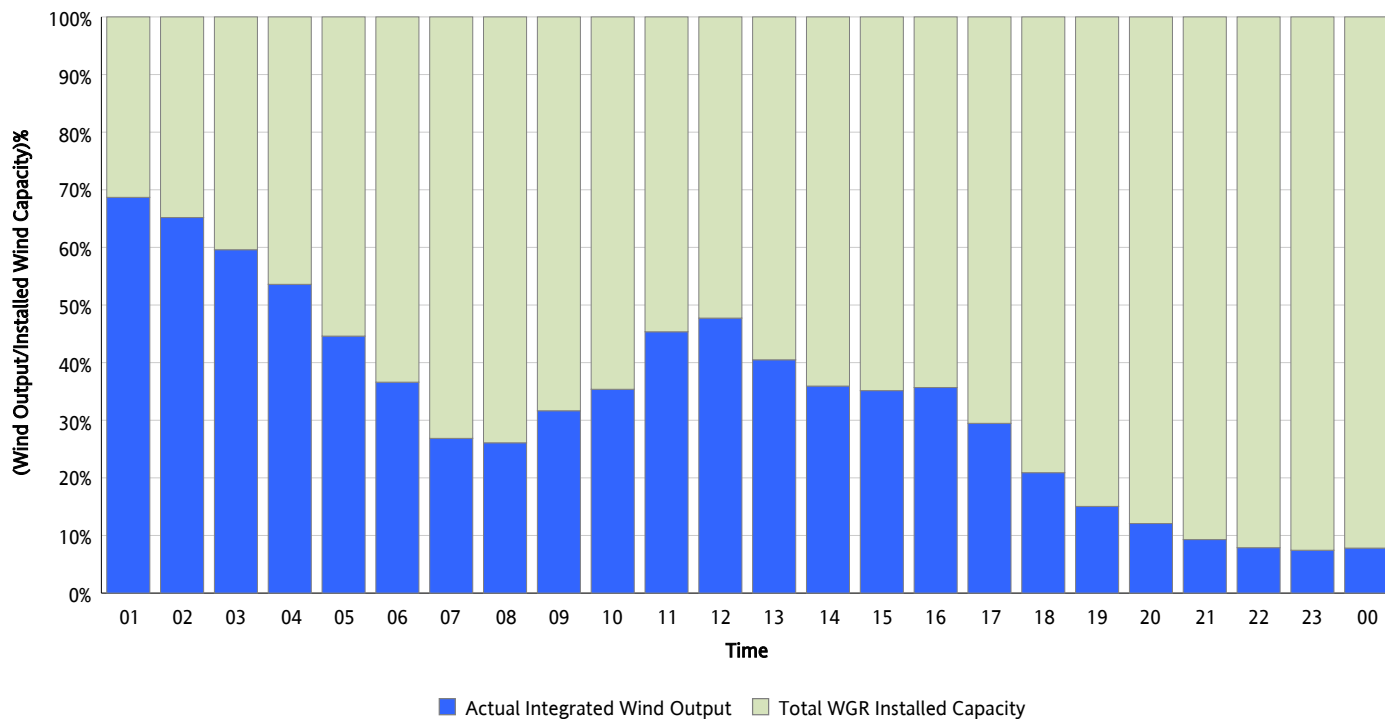
02/02/2013



\* Wind Record and Wind Max represent instantaneous values and the rest of the values are integrated over the hour

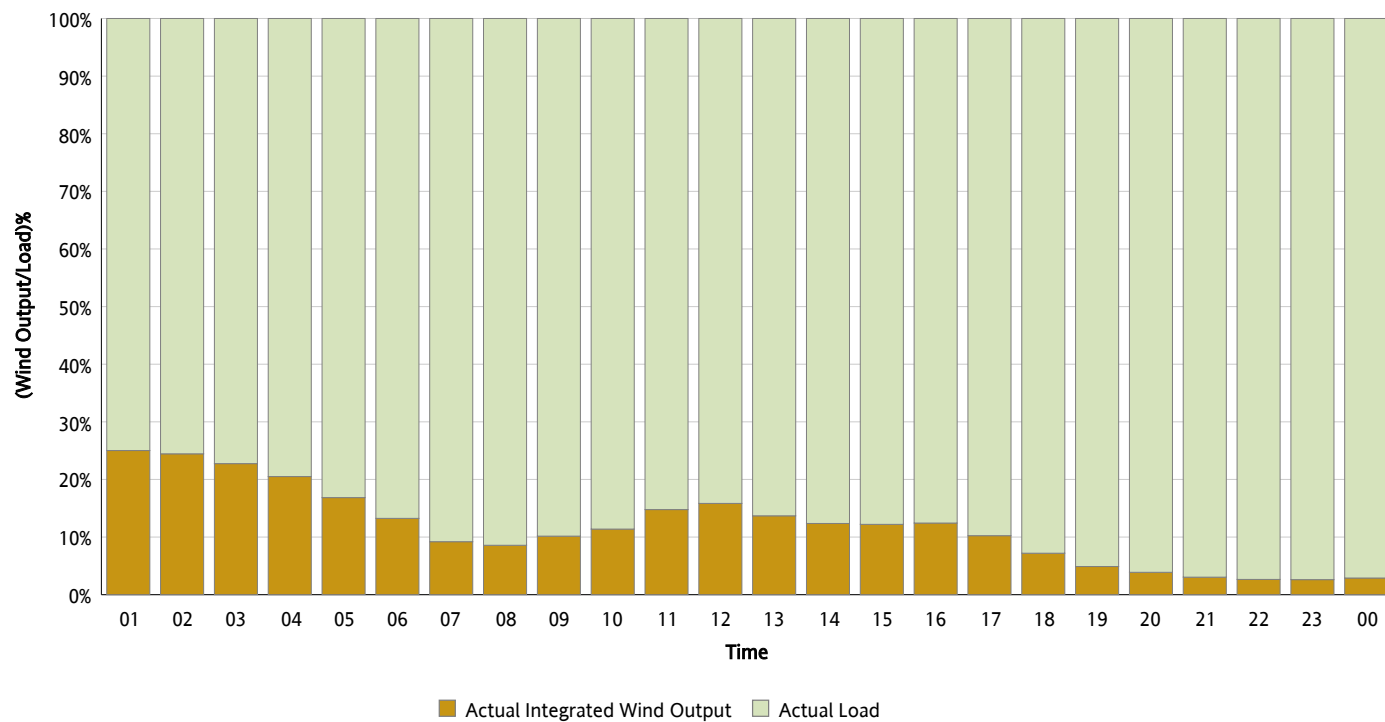
## Actual Wind Output as a Percentage of the Total Installed Wind Capacity

02/02/2013



## Actual Wind Output as a Percentage of the ERCOT Load

02/02/2013



## ERCOT Load vs. Actual Wind Output

01/26/2013 - 02/02/2013

